

VANISH™

COLOR CORRECTOR



Permanent color need not to be permanent.

- Color correction without stress or damage.
- VANISH™ gently reduces the size of the artificial color molecules, allowing the color to be washed away, with no damage to the hair.
- VANISH™ does not contain peroxide, bleach, or ammonia.
- VANISH™ does not affect the natural color of the hair, so permanent or semi-permanent hair color can be applied to the hair the same day.
- VANISH™ reverses the oxidation of permanent hair color.
- You may re-apply VANISH™ up to 3 times a day (if necessary).

New advanced formula!

Innovative technological advances provide the maximum color reduction available today without the usual mess and odor.

- Superior color reduction capabilities
- Gel-like, non-dripping consistency
- Fresh fragrance

VANISH™ LLC

24280 Middlebelt Rd.
Farmington Hills, MI 48336
Tel. 1-800-992-6080
www.colorvanish.com

Caution: If client is allergic to sulfur, do not use this product.

FOR A FULL COLOR CORRECTION

1 Shampoo hair, towel dry hair.

2



Mix 1 oz. bottle #1 and 1 oz. bottle #2 in a plastic applicator bottle.

3 Shake, apply immediately.

4

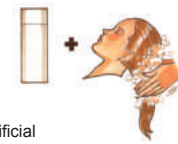


Let VANISH™ COLOR CORRECTOR process up to 20 minutes.

For maximum reduction, process with a plastic cap and heat for the full 20 minutes.

5

Shampoo 2-3 times, massage the hair vigorously for 5 minutes each time.



This will force the artificial pigment out of the hair shaft.

6 Rinse and towel dry.

7

On towel-dried hair, apply 10 volume developer to entire head.

Let sit for 10 minutes.



This will re-oxidize any artificial pigment still left in the hair. Rinse and shampoo out 10 vol. developer. If hair has re-darkened repeat steps 2 through 7.

8

For best results when coloring the same day, a strand test is recommended.

The target level should be adjusted.

Choose 2 to 3 levels LIGHTER than target level.

Strand test frequently.

FOR SLIGHT COLOR CORRECTION

If treated hair is darker and/or too intense

1 Shampoo hair.

2



Mix 1 oz. bottle #1 and 1 oz. bottle #2 in a plastic applicator bottle.

3

Apply this mixture only to necessary areas and let process until the desired reduction of color is achieved.

The processing time can take between 30 seconds and 10 minutes, depending on various factors such as color brand and shade.

No heat is necessary

4

Rinse and shampoo, then condition with a low PH conditioner.

Alternative methods are available for the use of VANISH™. See instruction for use inside of box.

FOR PROFESSIONAL USE ONLY.